

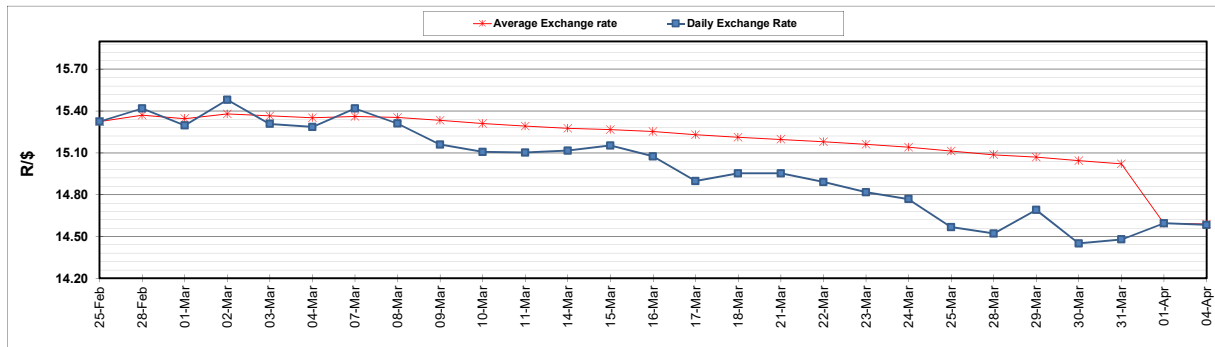
	PETROL 95 ULP	PETROL 93 ULP & LRP	DIESEL 0.05%	DIESEL 0.005%	ILL. PAR.
GAUTENG PUMP PRICE (SA c/l) AS FROM 06/04/2022	2,196.000	2,163.000	-	-	-
WHOLESALE PRICE (SA c/l) AS FROM 06/04/2022	-	-	2,101.440	2,123.840	1,584.688
SINGLE NATIONAL MAXIMUM RETAIL PRICE	-	-	-	-	2,045.000
BASIC FUEL PRICE - 04/04/2022 (SA c/l)	1,200.469	1,179.291	1,428.722	1,443.456	1,401.768
PRESS RELEASE CONTRIBUTION TO BFP 01/04/2022 - 04/04/2022 (SA c/l)	1,100.270	1,085.270	1,107.630	1,114.030	1,097.128
UNIT OVER/(UNDER) RECOVERY - 04/04/2022 (SA c/l)	(100.199)	(94.021)	(321.092)	(329.426)	(304.640)
AVERAGE BASIC FUEL PRICE 01/04/2022 - 04/04/2022	1,191.405	1,168.136	1,399.342	1,415.914	1,376.902
AVERAGE UNIT OVER/(UNDER) RECOVERY 01/04/2022 - 04/04/2022	(91.135)	(82.866)	(291.712)	(301.884)	(279.774)

ANALYSIS MOVEMENT OF AVERAGE OVER/(UNDER) RECOVERY

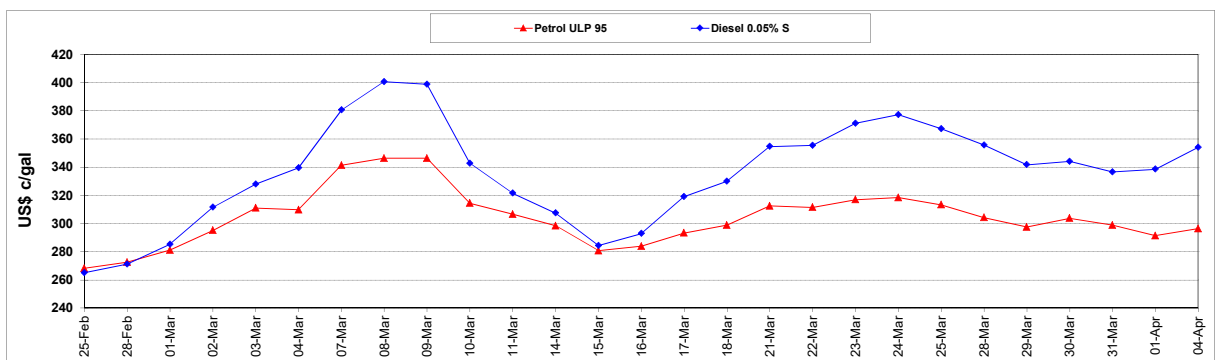
	PETROL 95	PETROL 93	DIESEL 0.05%	DIESEL 0.005%	ILL. PAR.
- MOVEMENT IN INTERNATIONAL PRODUCT PRICES	(126.443)	(117.485)	(333.182)	(343.846)	(320.579)
- MOVEMENT IN EXCHANGE RATE	35.308	34.619	41.471	41.962	40.806
AVERAGE UNIT OVER/(UNDER) RECOVERY 01/04/2022 - 04/04/2022	(91.135)	(82.866)	(291.712)	(301.884)	(279.774)

R/\$ EXCHANGE RATE - (R/\$14.5825 - 04/04/2022)

EXCHANGE RATE USED IN BASIC FUEL PRICE



INTERNATIONAL PRODUCT PRICES OF BASKET USED IN BASIC FUEL PRICE



BASIC FUEL PRICE IN SA CENTS PER LITRE

